

kemøn

A revolutionary colour system.  
Ammonia free and yoghurt based.

## Introducing Yo Colour by Kemon

- Made in Italy
  - Family business
- Yoghurt based
  - Rich, creamy and soft texture
- Ammonia free
- Gentle on the scalp
  - Non-irritant
- No odours



# KEY INGREDIENT – Velian Complex

Velian Complex is the result of a combination of:

- **Mullein** (*Verbascum densiflorum*):  
with soothing powers
- **Helichrysum** (*Helichrysum italicum*):  
with calming and refreshing powers
- **Flax** (*Linum usitatissimum*):  
with protective and emollient powers
- **Dyer's Chamomile** (*Anthemis tinctoria*):  
with antioxidant powers



# KEY INGREDIENT – Yoghurt Extract

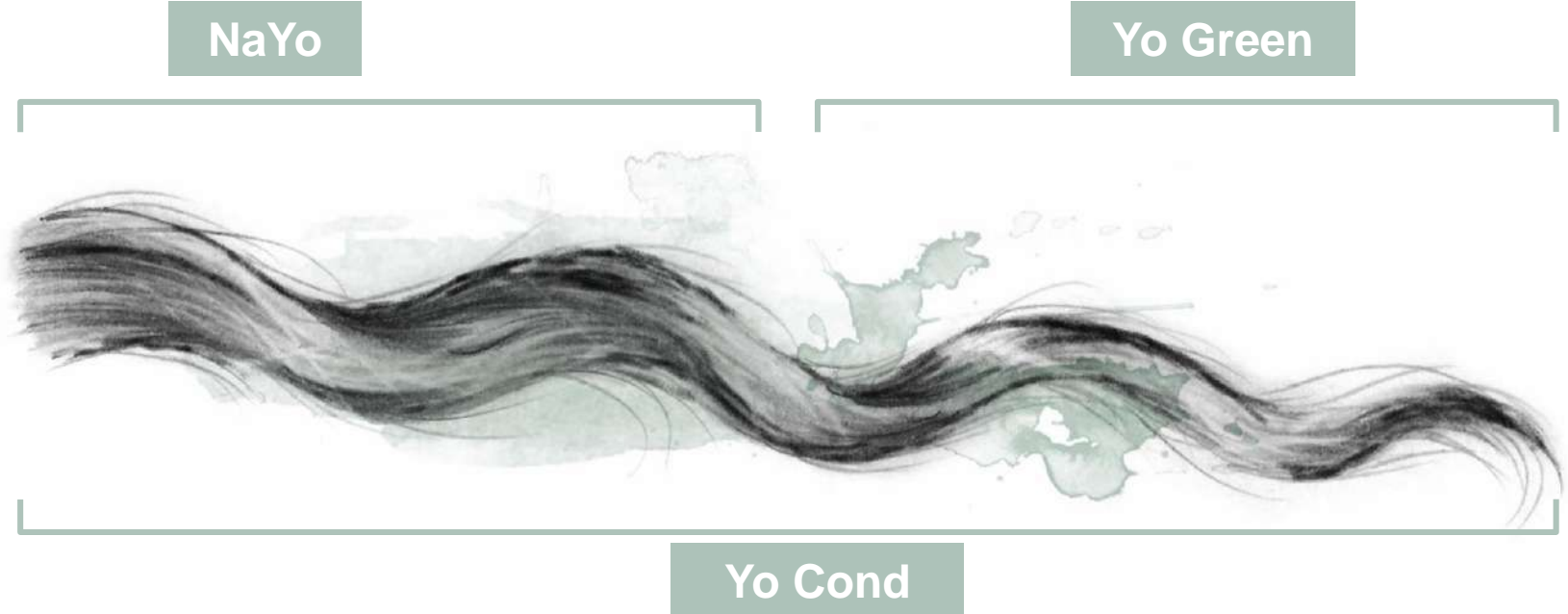
**The use of yoghurt in cosmetics is less well known, despite having a long history;** the various components of this powerful foodstuff exert different effects on the scalp and hair:

- **Lipids:** exert an emollient, soothing and shine-enhancing action on dry hair and scalp.
- **Probiotics:** feed the healthy bacterial flora of the scalp, promoting their natural balance.
- **Proteins:** nourishing and protective, they exert a restoring and strengthening effect on hair that undergoes the treatment.



# THREE SYNERGISTIC PRODUCTS

Yo Color System consists of three different products, with different pH values but **synergistic and harmonious shades**. The three products, NaYo, Yo Green and Yo Cond, aim to **treat the various needs of colour-treated hair in a targeted way**.



# Three Synergistic Products

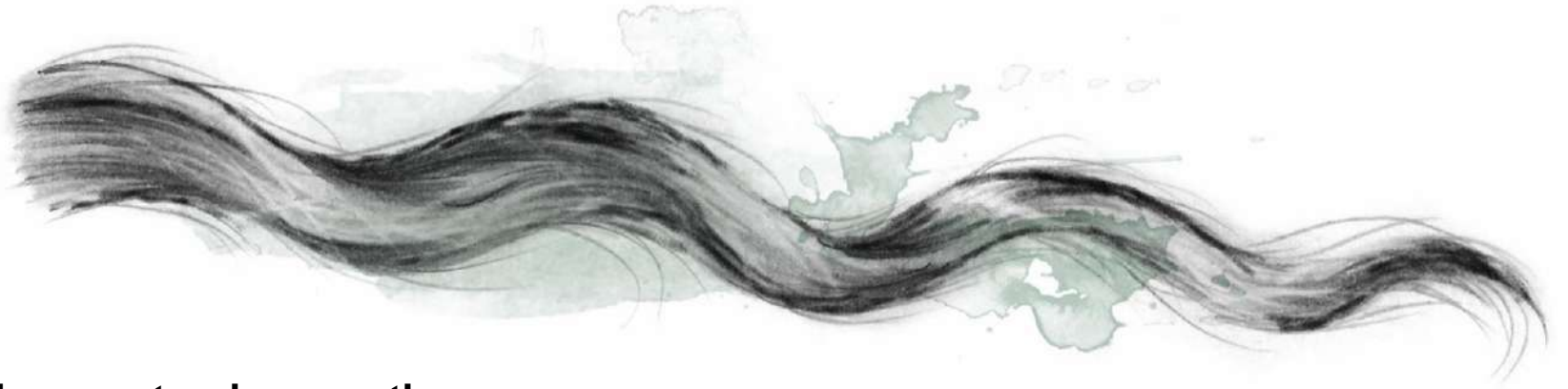
- Colours the natural re-growth
- Basic pH value - Alkaline
- Application on the roots
- With a mild formula that is highly tolerable for sensitive skin

- Uniform coloured mid-lengths and ends
- Virtually neutral pH value
- Application on the mid-lengths and ends
- Restores colour and the appearance of weakened hair with a nurturing and restorative effect



- Preserves and prolongs the life of coloured hair from root to tip
- Acidic pH
- Application on roots, mid-lengths and ends
- Accentuates the shine and nourishes the hair for a shiny and silky result

NaYo



**Colours natural regrowth**

**Alkaline pH**

Completely covers the natural roots with a formula that is gentle and highly tolerated by the scalp



NaYo

Without ammonia, PPD and perfume



- The substitute for ammonia is MEA = mono ethanol amine
- This is not as strong as ammonia – Important to wash the hair before you colour!!
- MEA is not as strong so it does not have the power to first remove dirt and then colour the hair – (if not washed first ... there could be poor coverage)



# NaYo: Colour with yoghurt

- Alkaline pH
- Up to 70% of ingredients from natural origins
- Permanent, gentle hair colouring with a creamy texture; containing no ammonia or fragrance.
- Covers the natural roots with a formula that is gentle and highly tolerated by the scalp (*perfect for sensitive scalps*).
- Delivers perfect coverage of white and grey hair still producing intense, shiny colour results.



## All Colour Series

- Mixing ratio: 1:1,5
- Processing time: 35 minutes
- Example: 50ml of NaYo colouring cream + 75ml of NaYo Cream Activator.

## Series Superlighteners

- Mixing ratio: 1:2 only with NaYo Cream Activator 40 Vol.
- Processing time: 50 minutes
- Example: 50ml of NaYo colouring cream + 100ml of NaYo Cream Activator.



# Activator

Vol / %	Mixing Ratio	Level lift
10vol / 3%	1 : 1	To darken or maintain same level – lighten up to 1 level
20vol / 6%	1 : 1	To lighten up to 2 levels & for grey/white coverage
30vol / 9%	1 : 1	To lighten up to 3 levels & for grey/white coverage
40vol / 12%	1 : 1	To lighten up to 4 levels with standard series
40vol/12%	1 : 2	To lighten up to 4/5 levels with Superlighteners

# Rules: White or Grey Coverage

## Direct Coverage



- The shades in the naturals:
  - Natural (X) Gold (.3), mahogany natural (.06) and copper natural (.04) series

Cover white and grey hair 100% with no need for adding base shades.

Example: Natural 4 Golds **5.3** – Mahogany Naturals **4.06** – Copper Naturals **6.04**

## Mixed Coverage

- With the other tonal series, you can achieve 50% coverage of white and grey hair.
- To achieve maximum coverage mix: 2/3 of the desired shade with 1/3 of the shade from the Naturals (X), Gold (.3), Mahogany Naturals (.06) and Copper Naturals (.04) series.
- Example: 2/3 Shade **7.4** + 1/3 Copper natural **7.04** (or **7**) + Developer

# NaYo Meches

4 pigment-rich shades that colour and re-pigment in one step.

- Mixing: only with 10- or 20-vol. activator
- Processing time: 35 minutes

LEVEL	STONE	NAME
40 = Brown	06 = Mahogany Natural	Chestnut
50 = Light brown	03 = Gold Natural	Walnut
60 = Dark blonde	04 = Copper Natural	Almond
70 = Blonde	00 = Natural	Hazelnut

For full coverage on coarse or stubborn hair –

Mix 1/3 Chosen Meches + 2/3 from Naturals, Gold, Mahogany, Copper series to give optimal results

# NaYo Superlighteners

Superlighteners should be used on a natural base 6 & above to achieve best results!

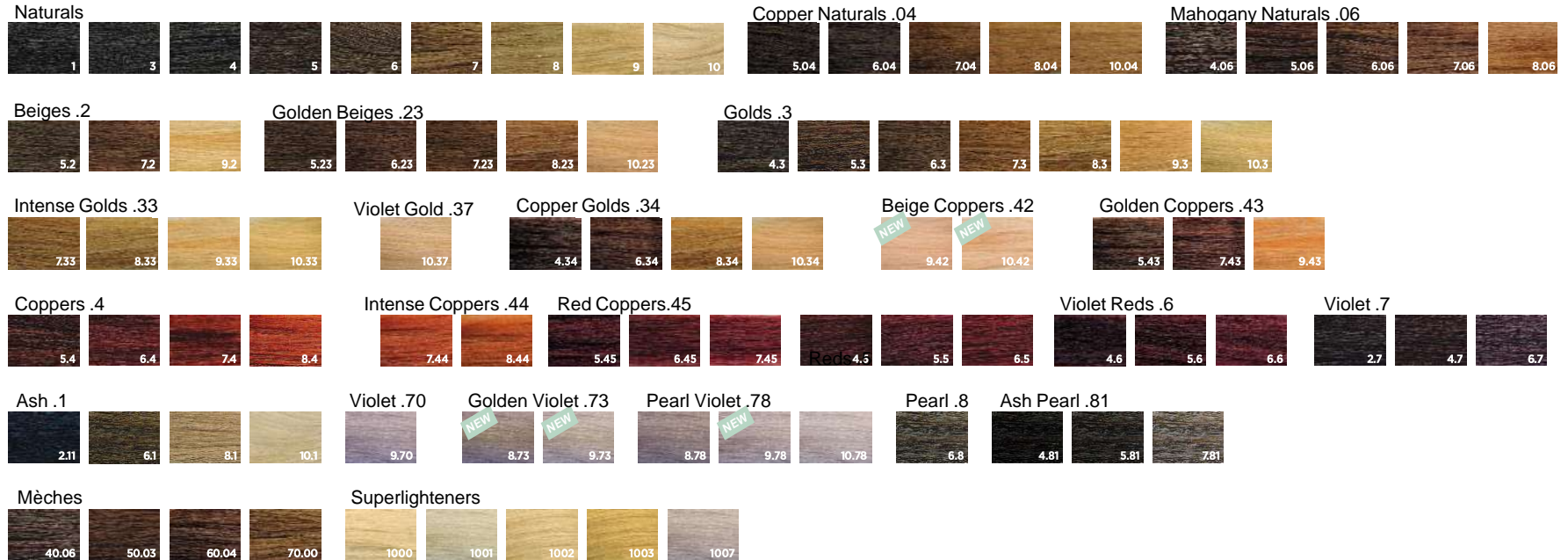
Example: From a natural Level 6/7 achieve up to level 10

Shade	Tone	Activator	Mix Ratio	Timing	Result
<b>NaYo 1000</b>	Natural	40vol/12%	1 : 2	50 mins	4/5 levels lift
<b>NaYo 1001</b>	Ash	40vol/12%	1 : 2	50 mins	4/5 levels lift
<b>NaYo 1002</b>	Beige	40vol/12%	1 : 2	50 mins	4/5 levels lift
<b>NaYo 1003</b>	Gold	40vol/12%	1 : 2	50 mins	4/5 levels lift
<b>NaYo 1007</b>	Ash/Violet	40vol/12%	1 : 2	50 mins	4/5 levels lift

# Colour Range

89 intermixable shades in 25 colour series.

A complete range for high-coverage, rich and vibrant colour results.



# Colour coded box

A colour code on the box makes each family of shades easier to recognise.

Level	Shade
10	Extra Light Blonde
9	Very Light Blonde
8	Light Blonde
7	Medium Blonde
6	Dark Blonde
5	Light Brown
4	Medium Brown
3	Dark Brown
1	Black

0	Natural
1	Ash
2	Beige
3	Gold
4	Copper
5	Mahogany
6	Red
7	Violet
8	Pearl



NATURALS  
COPPER NATURALS  
MAHOGANY NATURALS



GOLDEN VIOLETS  
BEIGES  
GOLDEN BEIGES



BEIGE COPPERS  
COPPERS  
GOLDEN COPPERS  
INTENSE COPPERS



VIOLETS  
VIOLET REDS  
VIOLET  
PEARL VIOLET



ASH  
PEARL  
ASH PEARLS



GOLDS  
INTENSE GOLDS  
VIOLET GOLD  
COPPER GOLDS



REDS  
RED COPPERS



MÈCHES



SUPERLIGHTENERS



Yo Green



**Tones coloured mid-shafts and ends**

**Neutral pH**

Restores the level and tone of sensitised hair by conditioning and restructuring.



Yo Green



Without PPD PTD Perfume silicone

- Tone-on-tone colouring gel, cream consistency with an essentially neutral pH to tone mid-lengths & ends.
- Makes it possible to restore level and tone in cosmetically treated hair, increasing the duration and level of shine, this results in a gentle and restorative action that does not further sensitise the hair structure. (Does not create any damage)
- Up to 84% of ingredients from natural origins
- Comes in a 60ml tube.

*Not designed to colour natural hair-*



# Yo Green - Results

- Perfectly Toned Blondes – with Pastel Meches
- Restores the level & enhances the Tone to match
- Maximum Shine
- Neutral pH
- Acts gently, without altering the hair structure or sensitising the hair



For use with the full Yo Green Colour Range

- Use only 1.9% or 6.5vol (do not mix with NaYo activator)
- Mixing ratio: 1:1,5
- Processing time: 5 - 20 mins  
(Dependant on the service)



## **To restore level and tone-**

- Apply Yo Green to mid-lengths and ends with 1:1.5 mixing ratio, and leave for 5 to 20 minutes.

## **Yo Green Neutro/CLEAR (0.0)**

- When used by itself, the neutral shade adds brilliance without changing the level or tone.
- Mixed with the other Yo Green shades, it makes it possible to achieve extreme shine and to soften the intensity of the tone.

## **Pastel Mèches Blondes**

- Used after high-lighting or bleaching, they tone and make it possible to achieve perfect pastel-toned blondes.
  - (They do not alter the tone of the natural hair).


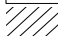
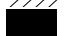
# Colour Range

36 Intermixable shades in 12 colour series

A complete range for intense, brilliant and long-lasting colour results



## COLOUR RESULTS:

-  Results achieved in a base 10
-  Results achieved in a base 8
-  Results achieved in a base 6



# Colour coded box

A colour code on the box makes each family of shades more easily recognisable.



**0.0**

NEUTRO  
NEUTRAL  
موزاكي  
NEUTRE

NEUTRAL  
NATURALS  
MAHOGANY NATURALS



**6.3**

BRUNO SCURO DORATO  
DARK GOLDEN BRONZE  
البناتر الذهبي الغامق  
BLOND FENICE DORE

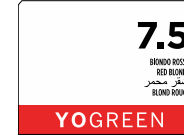
GOLDS



**4.4**

CASTANO ROUGE  
COPPER BROWN  
نبي نحاسي  
CASTAN ROUGE

COPPERS



**7.5**

BRUNO ROSSO  
RED-BLONDE  
البناتر محمر  
BLOND ROUGE

REDS



**4.7**

CASTANO VIOLEA  
VIOLET BROWN  
نبي بنفسجي  
CASTAN VIOLET

VIOLETS



**5.2**

CASTANO CHIARO BEIGE  
BEIGE LIGHT BROWN  
بناتر فاتح  
CASTAN CLAIR BEIGE

BEIGES  
ASH BEIGES



**10.1**

BRUNO PLATINO CENERE  
PLATINUM ASH BLENDE  
البناتر رمادي الباهي  
BLOND PLATINE CENERE

PASTEL  
MÈCHES  
BLONDES



**6.8**

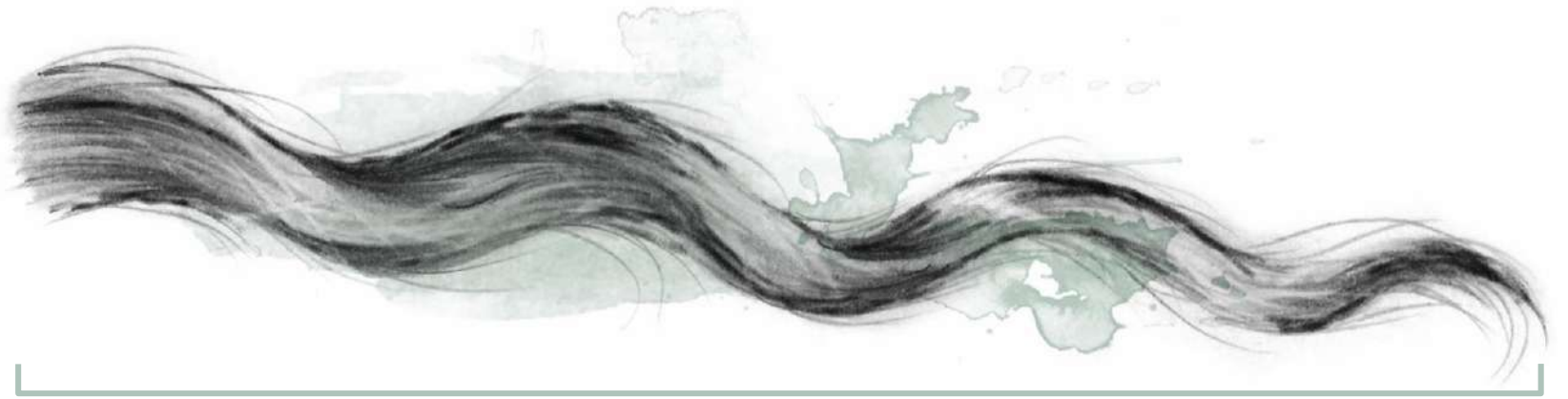
BRUNO SCURO PERLA  
DARK PEARL BLENDE  
البناتر عميق الالوان  
BLOND FENICE PERLE

PEARL



# Yo Cond

Yo Cond



**Maintains and extends the life of the colour at the base, mid-shafts and ends Acid pH**  
Highlights the tones and nourishes hair, making it lustrous and silky  
conditioning and restructuring



# Yo Cond

- Highlighting conditioner with an acid pH that colours and nourishes hair in a single step, perfectly closing the cuticle.
- Intensifies the tone and gives hair maximum luminosity and a colour that is full of vitality.
- 86% of ingredients from natural origins

*Do not pre pigmentate with the YoCond - It is too acidic*



# Application

- The average amount of product to be used is 30 ml.
- After shampooing, wearing protective gloves distribute evenly through the hair using a comb.
- Use Yo Cond every 3 to 5 shampoos.
- Processing time: 3 + minutes.
- The processing time for natural hair ranges from 3 to 10 minutes, depending on the hair's degree of porosity and the intensity of the desired tone.
- Once the processing time is up, emulsify and rinse thoroughly.

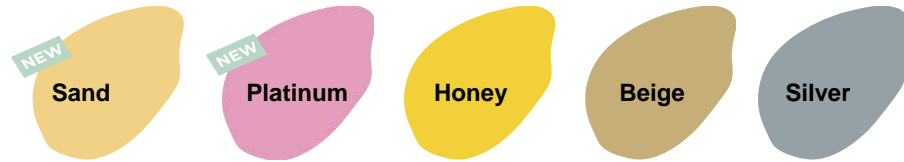
Yo Cond Clear: Neutral Conditioner (same base as Yo Cond, without pigment) leaving the hair brilliantly, nourished and protected.

- Apply after every shampoo like a normal conditioner.
- Processing time: 3 minutes, then rinse thoroughly.

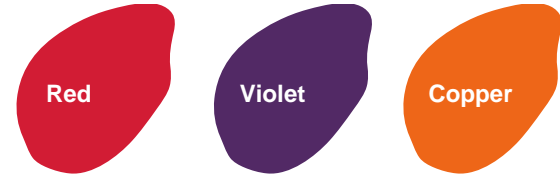


# Shades

For Blonde Hair:



For Intensely Coloured Hair:



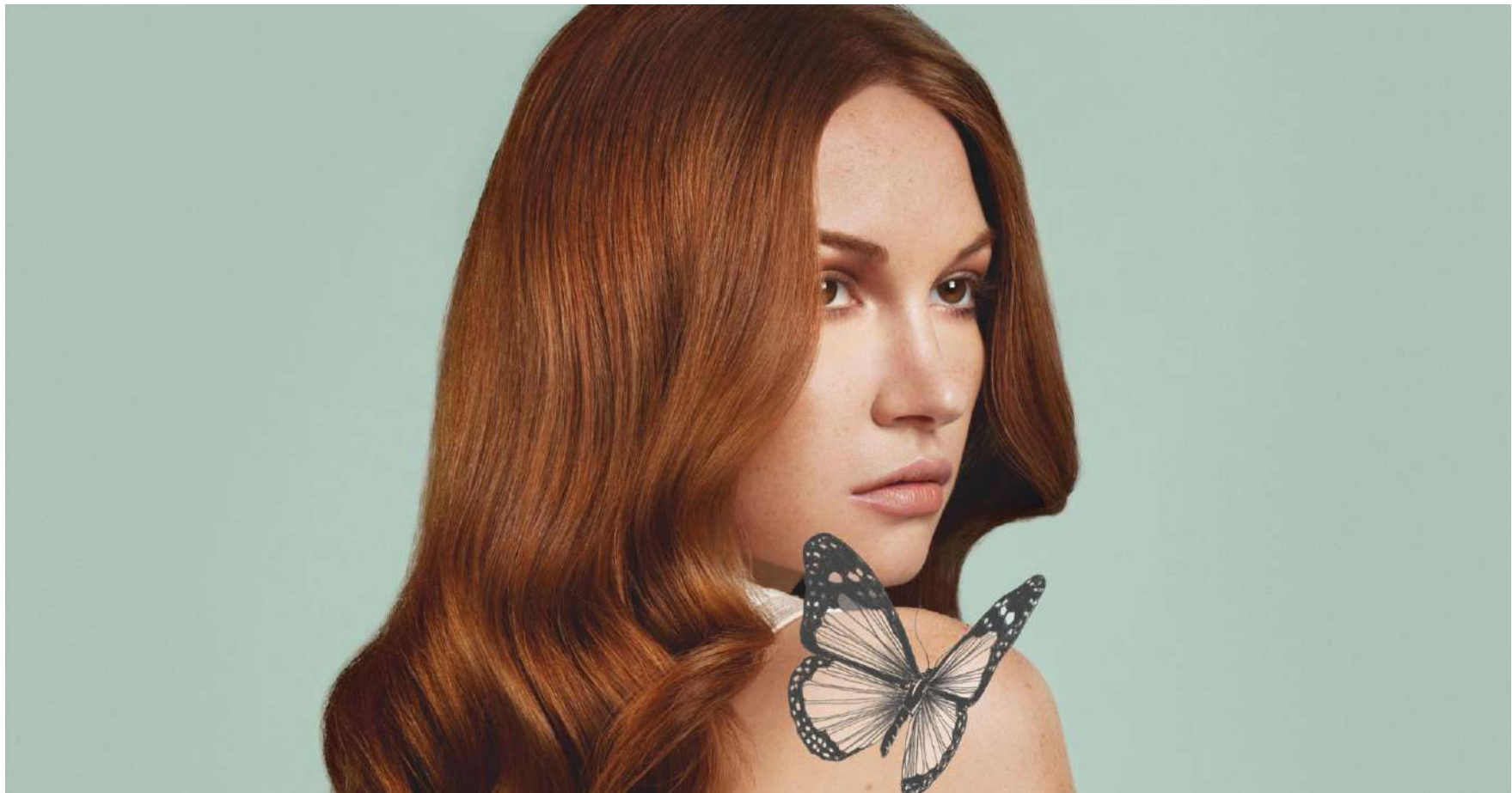
For dark or brown hair:



For white or grey hair



*\*these two shades belong to the categories for blondes and brown hair, but can also be used effectively on white or grey natural hair to correct level or tone.*



LUNEX

SYSTEM

Lunex System is the complete and **balanced hair bleaching system** that with its 7 products lets you:

PROTECT AND REINFORCE THE HAIR FIBRE

LIGHTEN HAIR WITH A NATURAL EFFECT

CREATE STREAKS AND LIGHT EFFECTS USING FREEHAND OR ANY OTHER LIGHTENING TECHNIQUES

PROVIDE LIGHT OR FULL-HEAD REMOVAL OF THE COSMETIC COLOUR

PROVIDE FULL-HEAD OR ON-SCALP BLEACHING SERVICES WITH ULTRA LIGHT RESULTS

CREATE BRIGHT, BRILLIANT AND LONG-LASTING COLOURS ON A BLEACHED OR COLOUR-TREATED BASE





# Lunex Restore System

# Lunex Restore System

What is this?

- Additive in a micellar solution for use in bleaching, with a restorative and protective effect.
- Specifically formulated to act synergistically with the products of the Lunex bleaching system.
- Adding Lunex Restore to the bleaching mixture helps to protect and maintain the hair fibre during bleaching:
  - it makes the hair stronger
  - more resistant to breakage
  - cosmetically more radiant and conditioned
- It does not affect the lightening capacity of the mixture to which it is added



# Lunex Restore System

## Bond Creator Complex -

The exclusive Bond Creator Complex (BCC)\* is a complex of naturally-occurring molecules.

Its restorative activity protects the hair treated with Lunex Restore from the possible side effects of the bleaching process.



# Lunex Restore System

## Features & Benefits

- Simple & quick to mix
- Protects the hair during the bleaching process
- Does not alter the lightening power & processing time
- Extreme lightening with maximum cosmetic effect
- Restorative action leaves the hair soft, lustrous & full-bodied, stronger & more resistant to breakage
- Can be used with any type of bleach powder or paste
- Can be used for all lightening techniques

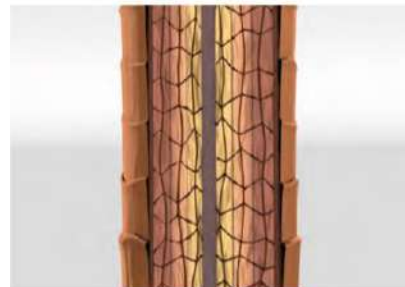


# Lunex Restore System

## Healthy hair

A resistant fibre is a characteristic of healthy hair. Keratin bundles are held together by a series of chemical bonds.

The most important among these for compact hair are disulfide bonds. The hair is strong and lustrous, that is, in the most suitable condition to receive any kind of treatment.



## Damaged hair

Stress, harsh treatments or other external agents can damage the disulfide bonds and compromise the hair structure: the hair becomes weak, dull and prone to breakage. Most technical services are often not recommended for hair in such conditions.

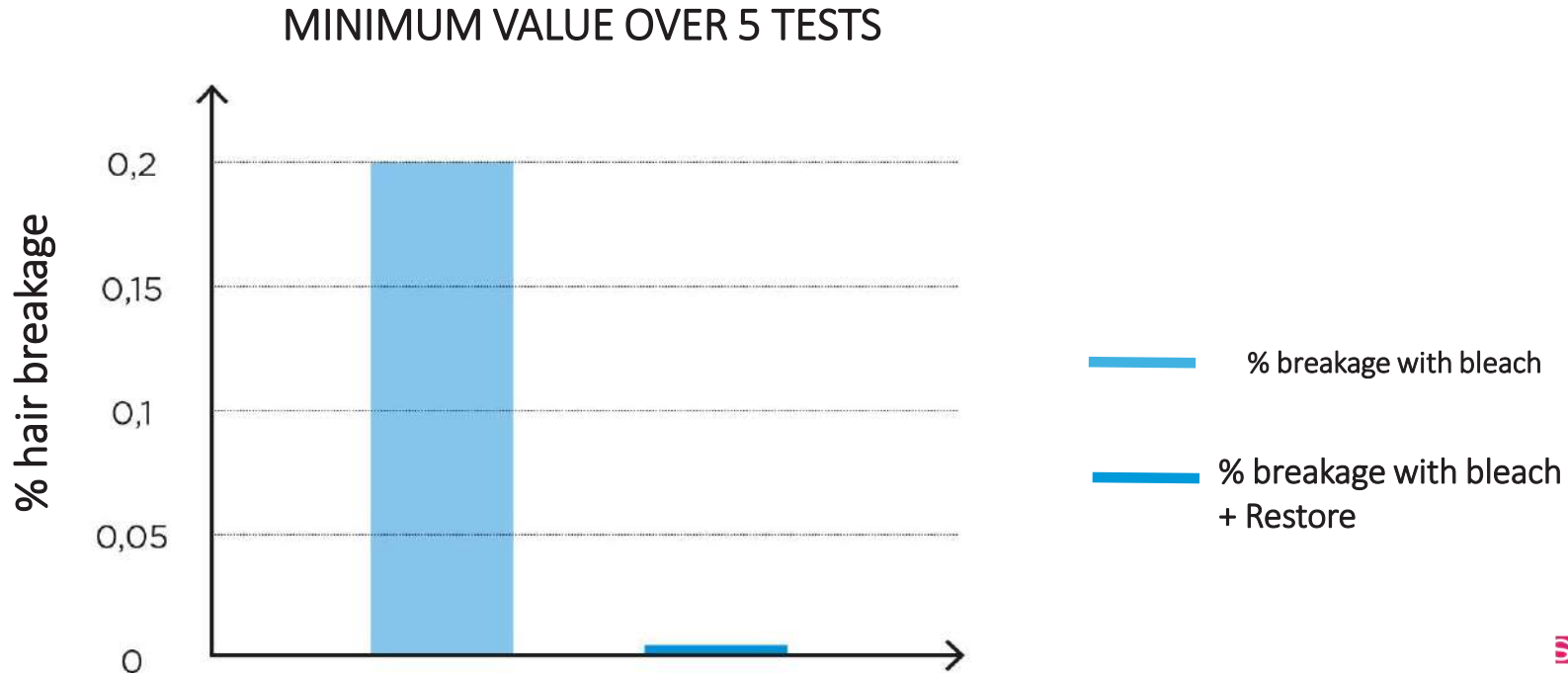


## BCC activity

**Bond Creator Complex** works by restoring the damaged disulfide bonds, rebuilding new ones and strengthening the hair structure.

# In vitro tests

In-house tests performed by the Kemon research and development laboratories have shown that when the **bleaching service is done with Lunex Restore**, hair breakage is **50 times less\*** than with a normal bleaching service.



# Application

*Unscrew the cap from the Lunex Restore bottle and screw in the measuring device with assembled dip tube. Make sure it is tightly fitted to the neck of the bottle.  
Squeeze the bottle to fill the dosing device with the needed amount of Lunex Restore.*

Follow the indications provided in the following table to calculate the right amount of Lunex Restore based on the type of bleach used.

TYPE OF BLEACH	AMOUNT OF BLEACH	AMOUNT OF LUNEX RESTORE
POWDER	20 g	5 ml
PASTE	40 g	5 ml

- Thoroughly mix the bleach and developer until creamy & smooth
- Pour the measured amount of product into the bleach mixture
- Blend with a brush making sure it is all mixed in & apply

# DeCap Super Powder Bleach



# Decap super

## What is this?

- Compact powder bleach with a base of cosmetic oils and blue pigment
- Lightens up to 6 levels, neutralising warm tones.
- Simple and quick to mix
- Does not swell – does not cake
- Application on virgin and colour-treated hair
- Excellent lightening power with anti-yellow effect
- Non-volatile and odourless
- Ideal for cosmetic hair colour removal
- Can be used with all lightening techniques



# Application

## Mixing Ratio:

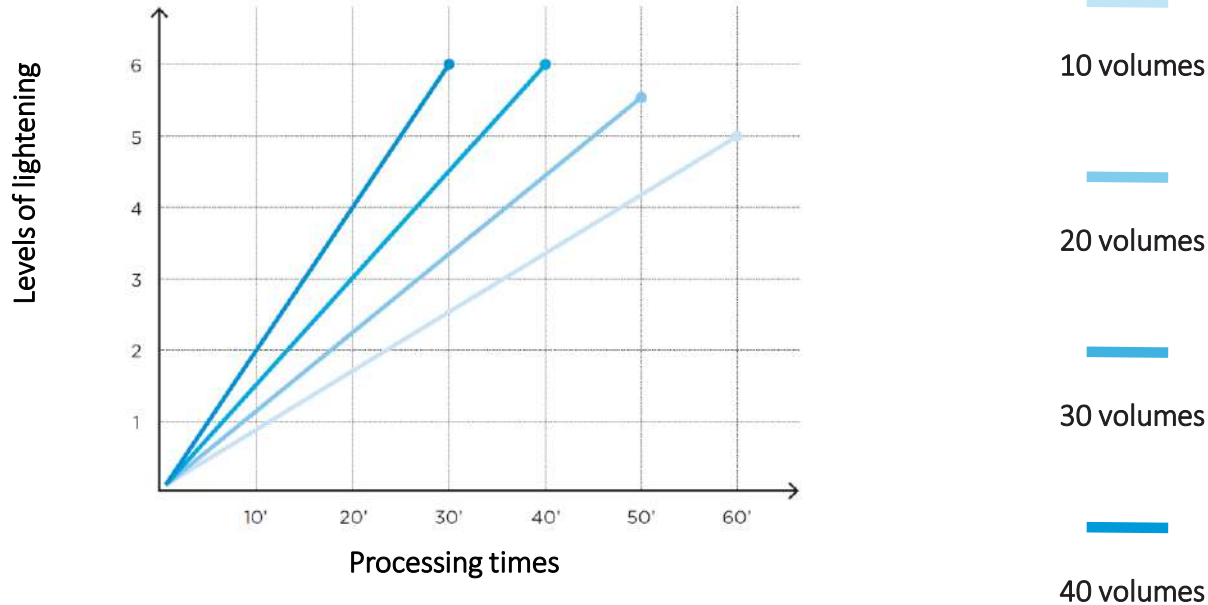
- One scoop of Lunex Decap Super with 40-70 ml of Uni.Color Oxi.
- The amount of Uni.Color Oxi will depend on the texture of the product and lightening technique desired.



# Application

## Levels of lightening and processing times -

The table below indicates the levels of lightening over a natural base and processing times based on the type of Uni.Color Oxi used.



# Super Powder Bleach

# Super Powder - Freehand

## What is this?

- Powder bleach ideal for freehand techniques, without the use of foil.
- Its particular texture allows excellent adherence to hair.
- Provides up to 6 levels of lightening.
- Chamomile extract –  
    With emollient and protective properties.
- Hydrolysed keratin -  
    Ensures uniform lightening on mid-shafts and ends without unwanted tones.



# Application

## Mixing ratio:

- Use with 10-, 20-, 30- or 40-vol. Uni.Color Oxi developer (The lightening result will depend on the amount of product applied on the section and on the volume of Uni.Color Oxy used: the higher the product amount and the developer volume, the lighter the result).
- One scoop of Lunex Super Powder (equal to 15 g) with 15-30 ml (The amount of Uni.Color Oxi will depend on the desired texture of the mixture).
- The lightening action stops when the mixture dries on hair, therefore it is important to reach the desired degree of lightening before this occurs, because freehand techniques do not allow the product to be re-applied on previously-lightened areas.

The lightening action is gradual and needs to be visually checked: once the desired degree of lightening has been reached, proceed to rinse.

# Application

## Levels of lightening and processing times:

Uni.Color Oxi	Result
10 & 20 vol	Soft, natural-looking lightening effects
30 & 40 vol	Require more than 2 levels lift

The hair condition must always be taken into account because the speed and result of the lightening process may vary - This happens with all bleaching products - depending on hair porosity, degree of sensitisation and type of hair - (virgin, colour-treated, permed or straightened).

# Ultra Cream Bleach



# Ultra Cream

## What is this?

- Cream bleach ideal for freehand techniques, without the use of foil
- Its particular texture allows excellent adherence to hair
- Provides up to 6 levels of lightening.
- Used for all techniques – On scalp (full head) Foils , Freehand Balayage
- Chamomile extract –  
    With emollient and protective properties
- Hydrolysed keratin –  
    Ensures uniform lightening from roots to ends and blondes without the yellow/orange effect.



# Features & Benefits

- Simple & quick to mix
- For both virgin & coloured hair
- Excellent lightening power with anti-yellow effect
- Lightening uniformity
- Ideal for in scalp beaching – extremely gentle
- Can be used for all other lightening techniques



# Application

## Mixing:

Lunex Ultra Cream can be used with 10 – 20 – 30 – 40 Uni.Color Oxi

## Ratio:

1 : 1 For a thicker consistency (1 part cream + 1 part Uni,Color Oxi)

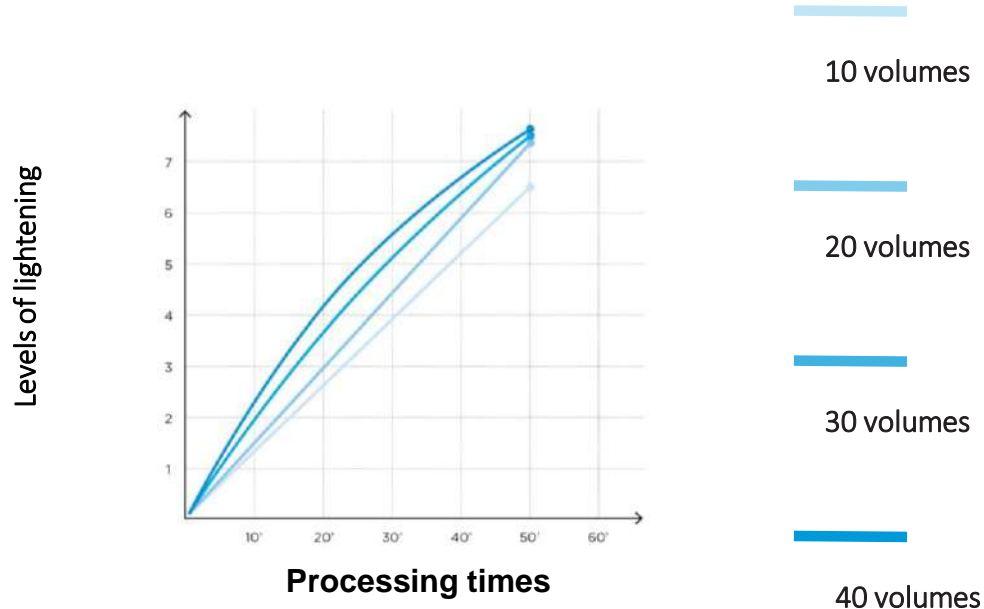
1 : 1.5 for a creamier consistency

Time : 10 to 50 minutes dependent on the hair structure & service

# Application

## Levels of lightening and processing times

The table below indicates the levels of lightening over a natural base and processing times based on the type of Uni.Color Oxi used.



# Ice Toner

# Ice Toner

## What is this?

Anti-yellow shampoo ideal for natural grey/white hair and for bleached or highlighted hair. It cleanses and tones in just one step and contains a special purple pigment that neutralises unwanted yellow tones, thus giving hair a lustrous neutral tone and avoiding undesirable bluish tinges.

### *Bond Creator Complex (BCC)*

Protects bleached hair, strengthening the hair structure and restoring the damaged disulfide bonds.

### *Chamomile extract*

With emollient and soothing properties

### *Hydrolysed keratin*

Protects the hair, making it strong and lustrous



# Ice Toner — Added Benefits

- Tones bleached hair for perfect pure blonde results
- Removes those yellow tinges typically in natural grey/white hair
- Perfect for maintaining cool blondes
- Gives blondes natural look & enhances luminosity & shine
- Cleanses gently, nourishing the hair leaving it silky & soft
- Does not stain the scalp
- Silicone free



# Application

## Directions for use:

The product is ready to use; no mixing is necessary. You can perform the service directly at the backwash. Wear suitable gloves and distribute the product on damp hair, emulsify and leave in place as needed, then rinse thoroughly.

## Processing time:

The processing time and hair porosity have an impact on the tone intensity. Consequently, the healthier the hair, the lower the deposit of the purple pigment. The following table shows the indicative processing times.

TYPE OF HAIR	APPLICATION BASE	PROCESSING TIME
NATURAL	Natural grey or white	1 to 5 minutes depending on how intense the existing yellow tone is
BLEACHED OR HIGHLIGHTED	Levels 8 - 9	Up to 2 minutes
BLEACHED OR HIGHLIGHTED	Levels 9 - 10	Check visually



# Application Tip -

## Services on natural grey/white and bleached hair - Toning shampoo:

After any bleaching service or lightening technique with bleach, it is necessary to tone hair. In general, this is done with tone-on-tone colours used with low-strength developers. Lunex Ice Toner replaces this service whenever clients wish to remove yellow tones and achieve very light and luminous blondes.

Lunex Ice Toner is also ideal to maintain cool results obtained through classic colour services.

# Lunex Light

# Lunex Light

## What is this?

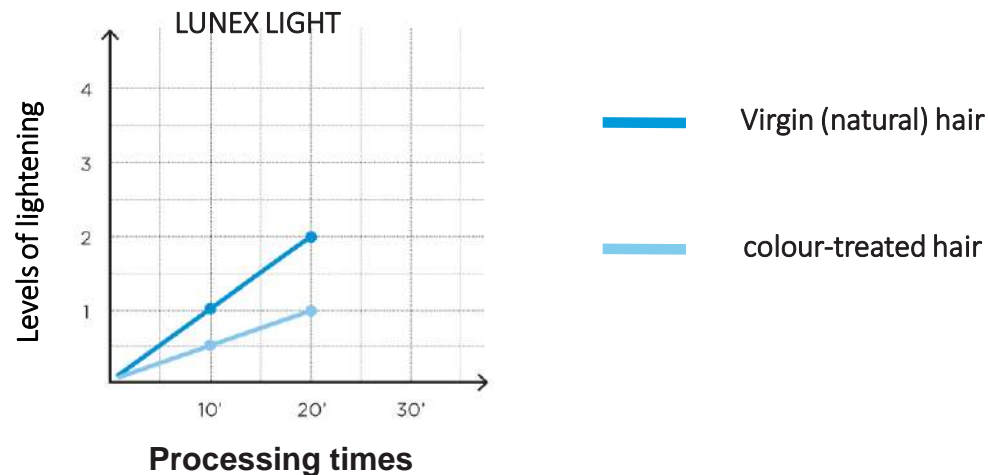
- Cosmetic lightening gel treatment that lets you achieve subtle lightening results (up to 2 levels) and natural-looking lighter panels
- It also makes it possible to lighten any cosmetic colour build-up, enhancing the intensity of the original tone



# Application – Lunex Light

## Mixing – 1 : 2

(One part of Lunex Light 1 with two parts of Lunex Light 2, blending until achieving a smooth mixture)



- Natural base- 1 level, the processing time will be 10 minutes - 2 levels 20 minutes
- Colour-treated hair-1/2 level, the processing time will be 10 minutes - 1 level 20 minutes

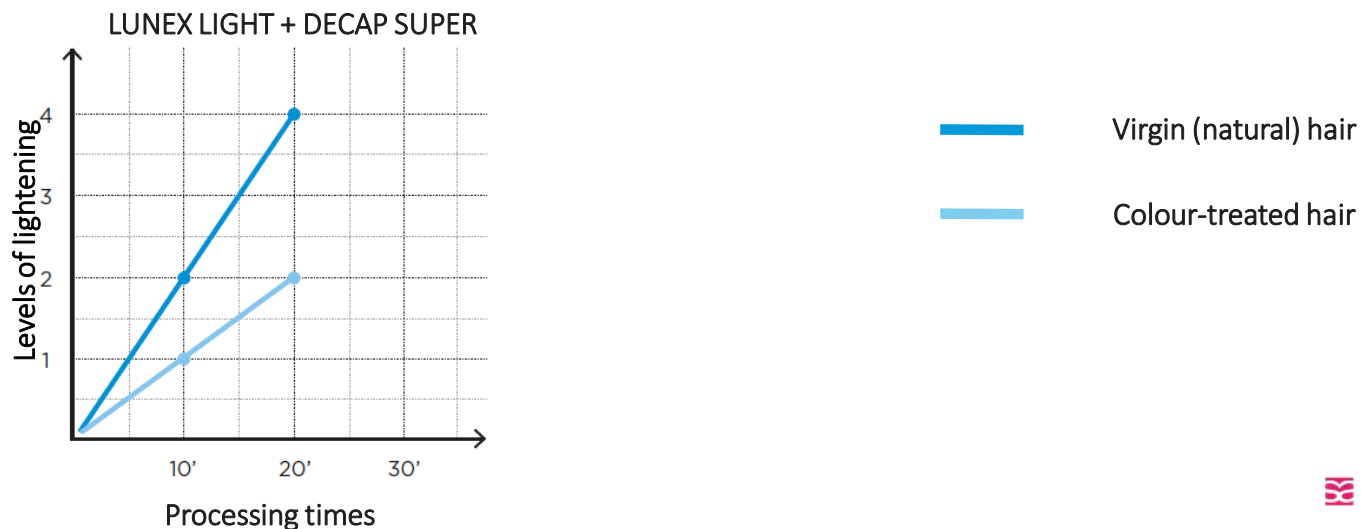
## Application – Using Lunex Light + Decap Super

To double the lightening power up to **4 levels** over a natural base and **2 levels** over a colour-treated base:

Mix one part of **Lunex Light 1** with two parts of **Lunex Light 2** and add 10 g of **Lunex Decap Super** for every 90 ml of mixture.

The processing time will be 20 minutes.

The type of tone & colour applied may limit the lightening result on colour-treated bases.



# Application - Tips

## Services on virgin hair

1. For hair that looks naturally sun streaked.

- Apply the mixture on dry hair throughout the entire head.
- Depending on the lightening intensity, leave for 5 to 20 minutes.
- Rinse thoroughly, shampoo and proceed to style.

2. To create three-dimensional effects.

- Streak hair using the chosen product and method (e.g. foil or Sticky Mèches).
- Depending on the lightening intensity, leave for 5 to 20 minutes.
- Rinse and towel dry thoroughly.



application  
with brush



with applicator  
bottle

# Application - Tips

3. As preparation for first lightening or super-lightening colour treatment.
  - Distribute the product on the mid-shafts and ends.
  - Leave for 20 minutes.
  - Remove the excess product with a fine-tooth comb.
  - Apply the lightening or super-lightening colour treatment product on the roots, mid-lengths & ends.
  - Rinse thoroughly.



application  
with brush



with applicator  
bottle

*Important: Should you need to add Lunex Decap Super to the mixture (for greater lightening power), rinse the hair first, do a light shampoo and proceed to apply the colour.*

# Application - Tips

## Services on colour-treated hair

4. As a pre-colour treatment to remove stains and demarcation lines.
  - Apply the mixture on dry hair in the areas with colour build-up and demarcation lines.
  - Leave for 15 to 20 minutes.
  - Remove the excess product with a fine-tooth comb.
  - Without rinsing, apply the chosen colour as normally directed and in accordance with the recommended processing times.



application  
with brush



with  
applicator  
bottle



application with  
sticky mèches



application  
with foil

*Important: Should you need to add Lunex Decap Super to the mixture (for greater lightening power), rinse the hair first, do a light shampoo and proceed to apply the colour.*



# Application - Tips

## Services on colour-treated hair

5. To enhance lustre and tone in warm colours (reds, coppers, golds).

- Apply the mixture on dry hair, distributing it throughout the entire head.
- Leave for 15 to 20 minutes.
- Massage gently.
- Remove the excess product with a fine-tooth comb.
- Without rinsing, apply the chosen colour as normally directed and in accordance with the recommended processing times.



application  
with brush



with  
applicator  
bottle



application with  
sticky mèches



application  
with foil

*Important: Should you need to add Lunex Decap Super to the mixture (for greater lightening power), rinse the hair first, do a light shampoo and proceed to apply the colour.*

Lunex Light Fast

# Lunex Light Fast



## What is this?

- Fast-acting leave-in cosmetic lightening treatment that lets you create streaks and highlights on dry hair after styling
- Used with a flat iron, Lunex Light Fast lets you lighten virgin and colour-treated hair by about 2 levels during styling
- You can localise the areas to highlight based on the haircut and choose the level of lightening by varying the number of flat iron passes
- Chamomile extract - With emollient and protective properties
- Hydrolysed keratin -Ensures uniform lightening on mid-shafts and ends without unwanted tones.

*Important: This service can be performed on virgin hair or hair that has been coloured with developers up to 20 vol. or, if the hair is in good condition, 30 vol.*

## Application – Lightening after styling:

- Wear gloves and make sure your customer has a cape (use a face shield if needed)
- No mixing required
- Identify the hair sections to lighten based on the cut, style or face shape and pour the necessary amount of product into a colour mixing bowl (amount varies depending on hair length and the number of sections you want to lighten)
- Use sponge brush to apply (remove any excess product from the sponge to avoid dripping during application)
- Apply to dry hair, run the sponge brush on the chosen hair section; avoid touching the scalp
- Using the flat iron and a comb, activate the lightening effect with repeated quick passes over the section at a temperature not higher than 170°/190°C (For uniform lightening, glide the iron over the section quickly, at an even speed, and proceed without stopping until the section is completely dry. Visually check the result as it instantaneously appears).
- To achieve more pronounced lightening (no more than two levels) and if the condition of the hair allows it, apply a second time.

# Lunex Light Fast

- Do not apply the product in direct contact with the scalp.
- Do not saturate the hair with Lunex Light Fast.
- Do not exceed two levels of lightening.
- Do not use on previously bleached hair.
- Do not apply the product more than twice on a section.
- Do not rinse hair after the treatment.
- Do not put leftover product back in the bottle after the service